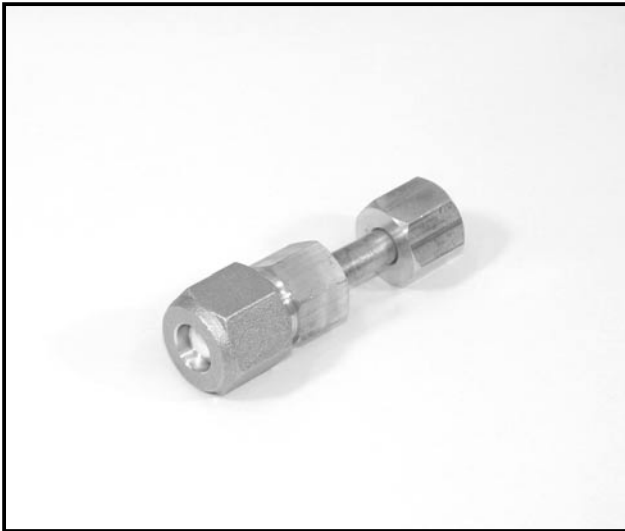




Photo



Descriptions

A part to connect refrigerant pipes of the different diameter.
(Unit Φ 9.52 → Φ 12.7)

Applicable Models

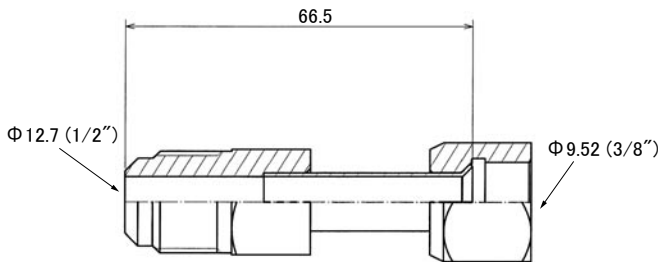
■ PUHZ-RP

Specifications

Pipe diameter	Φ 9.52
Pipe material	C 1220T - OL

Dimensions

Unit : mm (inch)



How to Use / How to Install

Make sure that you have all the following parts, in addition to this manual in this box:

Joint Pipe
 PAC-SG72RJ-E (unit side: Φ 6.35 diameter, onsite pipe side: Φ 9.52 diameter)
 PAC-SG73RJ-E (unit side: Φ 9.52 diameter, onsite pipe side: Φ 12.70 diameter)
 PAC-SG74RJ-E (unit side: Φ 12.70 diameter, onsite pipe side: Φ 15.88 diameter)
 PAC-SG75RJ-E (unit side: Φ 15.88 diameter, onsite pipe side: Φ 19.05 diameter)

Unit side Onsite piping side

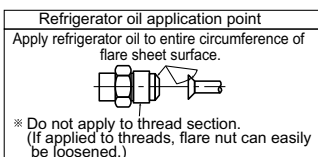
Installation procedure
 (carefully read the following before installing.)
 This optional part is used to connect indoor/outdoor unit to onsite pipes of different diameters.
 ※ When installing this optional part, be sure to read "Refrigerant pipe connection" in the installation manual attached to outdoor unit.

- 1) Apply flare processing to onsite pipes to adapt to R410A, according to the table on the right. Use optional accessory flare nut at this time.
 ※ Check the installation manual attached to the outdoor unit for advisability on whether or not onsite (existing) pipes can be used.
 ※ When pipe of 19.05 diameter is used, be sure to turn ON the SW8-1 on outdoor unit control board.

Pipe diameter (mm)	B size (mm)		Outer diameter of copper pipe (mm)	Processing size of flare section (mm)	Flare shape
	R410A flare tool	R22/R407C flare tool			
Φ 6.35 (1/4")	0~0.5	1.0~1.5	Φ 6.35	8.7~9.1	
Φ 9.52 (3/8")	0~0.5	1.0~1.5	Φ 9.52	12.8~13.2	
Φ 12.70 (1/2")	0~0.5	1.0~1.5	Φ 12.70	16.2~16.6	
Φ 15.88 (5/8")	0~0.5	1.0~1.5	Φ 15.88	19.3~19.7	
Φ 19.05 (3/4")	0~0.5	1.0~1.5	Φ 19.05	23.6~24.0	

※ When flare processing for refrigerant R410A is applied using current tool, refer to the table above. B size can be secured using copper pipe gauge for margin adjustment.

- 2) Remove caps (both ends) for protection against mixing of foreign materials from optional part, and thinly apply refrigerant oil (locally procured) on flare surface.



- 3) Securely tighten flare nut using torque wrench according to the table on the right.
 (Proper tightening torque using torque wrench)

Outer diameter of copper pipe (mm)	Tightening torque N·m (kgf·cm)
Φ 6.35	14~18 (140~180)
Φ 9.52	34~42 (340~420)
Φ 12.70	49~61 (490~610)
Φ 15.88	68~82 (680~820)
Φ 19.05	100~120 (1000~1200)

- 4) After refrigerant pipe is connected, be sure to perform gas leakage inspection for onsite connection pipes (including this optional part) and indoor/outdoor unit.
- 5) Heat insulation is necessary for this optional part: Wrap heat insulator (locally procured) around the onsite pipes and also the optional part (for dewdrop dripping prevention).
- 6) Perform test run according to the installation manual of the unit, making sure to also perform operation check.